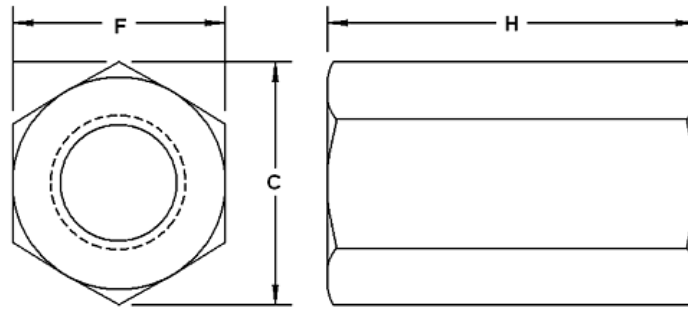


Hex Coupling Nut



Standard Pattern Nuts
SAE J995 Grade 2, ASTM A563

Zinc = NCUP020----Z1

Standard

Nominal Size	F	C		H	Weight per C
	Width Across Flats	Width Across Corners		Thickness	
		Max	Min		
#4	5/16			7/16	.5
#6	5/16			1/2	.5
#8	5/16			5/8	1.1
#10	5/16			3/4	1.3
1/4	7/16	0.505	0.488	1-1/2	6.2
5/16	1/2	0.577	0.557	1-1/8	7.5
3/8	5/8	0.650	0.628	1-3/4	9
7/16	5/8	0.794	0.768	1-3/4	10
1/2	3/4	.866	.839	1-3/4	10.4
5/8	15/16	1.083	1.051	2-1/8	18
3/4	1-1/8	1.299	1.240	2-1/4	28
7/8	1-5/16	1.516	1.447	2-1/2	55
1	1-1/2	1.732	1.653	2-3/4	56
1-1/8	1-11/16	1.949	1.859	3	66
1-1/4	1-7/8	2.165	2.066	3-3/4	143
1-3/8	2-1/16	2.382	2.273		
1-1/2	2-1/4	2.598	2.480	4	188

Economy Pattern Nuts
SAE J995 Grade 2, ASTM A563

Zinc = NCUP020----Z1-ECON

Economy

Nominal Size	F	C		H	Weight per C
	Width Across Flats	Width Across Corners		Thickness	
		Max	Min		
1/4	3/8	0.505	0.488	7/8	1.9
5/16	7/16	0.577	0.557	7/8	3.8
3/8	1/2	0.650	0.628	1-1/8	3.5
7/16	9/16	0.794	0.768	1-1/4	4.7
1/2	5/8	.866	.839	1-1/4	5.5
5/8	13/16	1.083	1.051	1-7/8	16